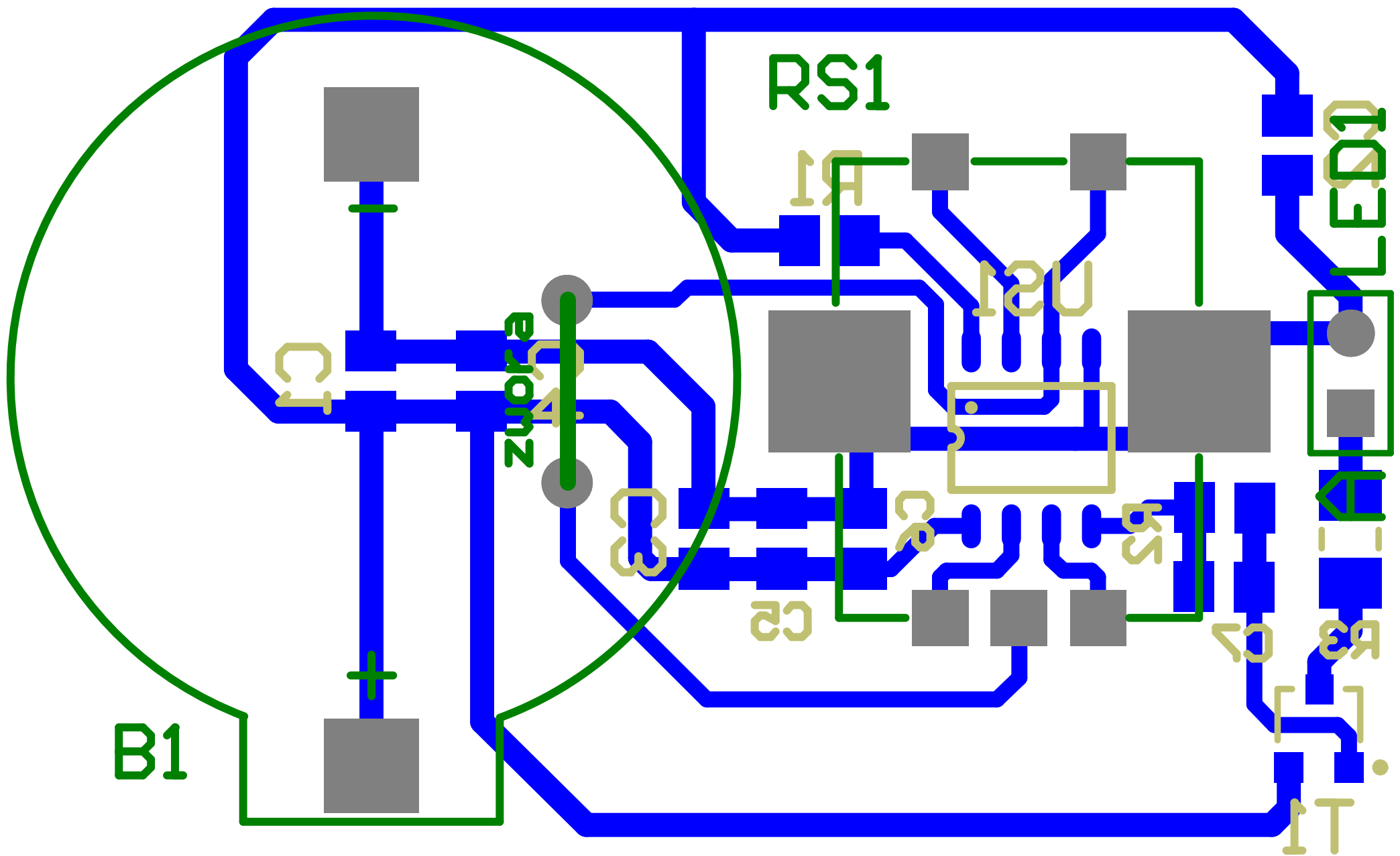


| | | |
|------------|-----------------------------------|-----------|
| Title | | |
| Size A4 | Number | Revision |
| Date: | 2016-01-05 | Sheet of |
| File: | D:\projekty\ster led pilot.SchDoc | Drawn By: |

Futr zaczek



| Comment | Description | Designator | Footprint | LibRef | Quantity |
|-------------------------------------|--|------------|-----------------|-------------|----------|
| CR2032 | | B1 | CR20xx THT | BAT | 1 |
| 10u | | C1, C2, C3 | MELF-0805 | kondensator | 3 |
| 100n | | C4, C5 | MELF-0805 | kondensator | 2 |
| 1n | | C6, C7 | MELF-0805 | kondensator | 2 |
| IR 950nm 5mm | Header, 2-Pin | LED1 | HDR1X2 | Header 2 | 1 |
| 1k | | R1, R2 | MELF-0805 | rezystor | 2 |
| 4,7 | | R3 | MELF-1206 | rezystor | 1 |
| Impulsator ED1110S 05-20C20-15KQ | | RS1 | enkoder pionowy | enkoder | 1 |
| BC807 | General Purpose Transistor PNP Silicon | T1 | 318-08 | BC858CLT1 | 1 |
| ATTINY13V SO8-15 | | US1 | SO8-150mil | ATTINY13 | 1 |