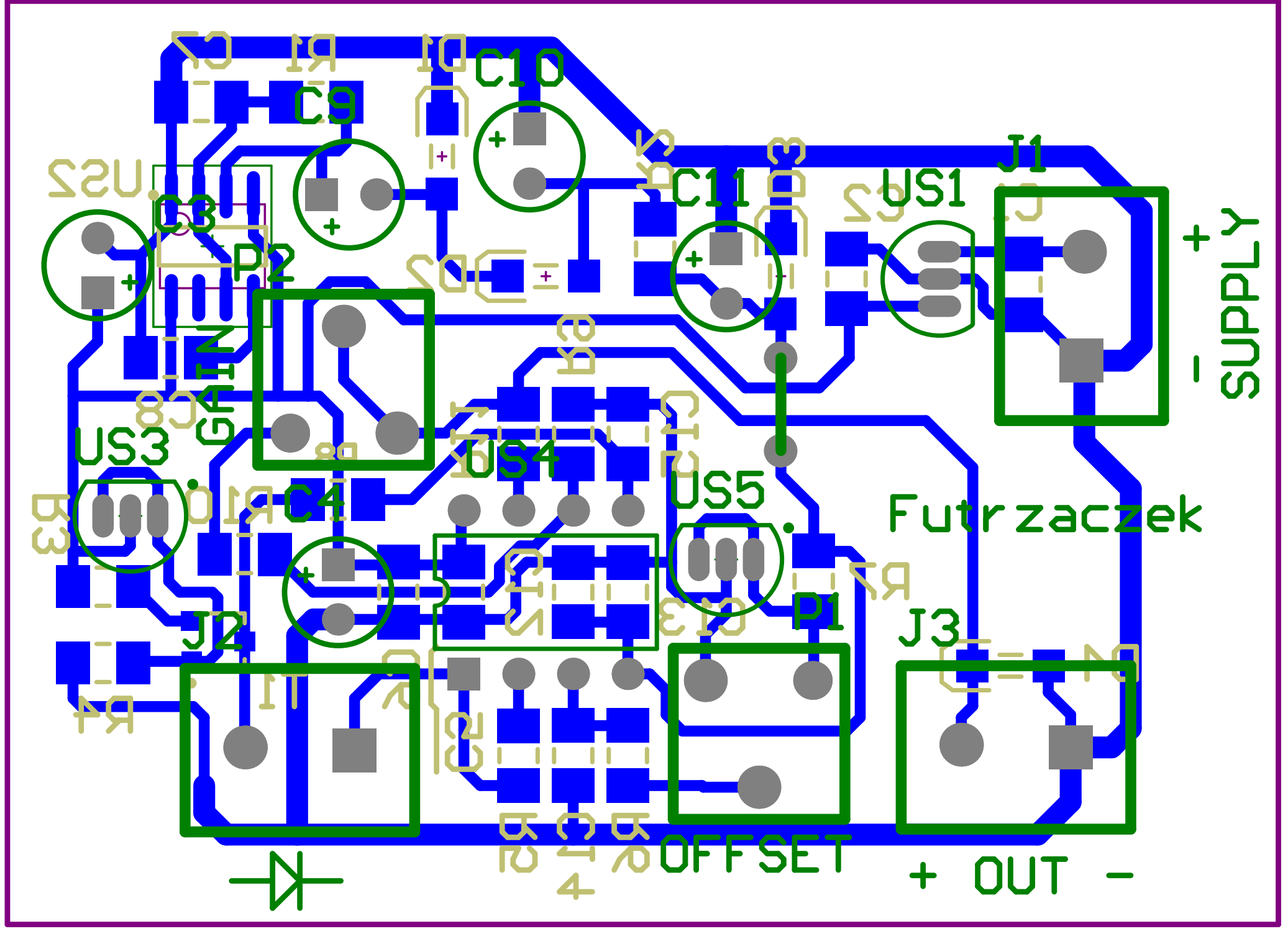


Title		
Size	Number	Revision
A4		
Date:	2015-09-03	Sheet of
File:	D:\projekty\...przetw temp.SchDoc	Drawn By:



Comment	Description	Designator	Footprint	LibRef	Quantity
100n		C1, C2, C5, C8, C12, C14, C15	MELF-1206	kondensator	7
100u/25V	Polarized Capacitor	C3, C4, C9, C10, C11	2,5/5mm elektrolit	kond biegunowy	5
4,7n		C6, C7, C13	MELF-1206	kondensator	3
1N4148	Default Diode	D1, D2	dioda MINIMELF	Diode	2
5,1V	Zener Diode	D3, D4	dioda MINIMELF	D Zener	2
ARK2		J1, J2, J3	ARK2 5mm	ARK2	3
100k		P1, P2	pot mont poziom	pot mont	2
3,9k		R1, R7	MELF-1206	rezystor	2
47		R2	MELF-1206	rezystor	1
1k 1%		R3	MELF-1206	rezystor	1
2,2k		R4	MELF-1206	rezystor	1
100k		R5, R6, R8, R9	MELF-1206	rezystor	4
0		R10	MELF-1206	rezystor	1
470		R11	MELF-1206	rezystor	1
BC857	General Purpose Transistor PNP Silicon	T1	318-08	BC857ALT1	1
78L09	Positive Voltage Regulator	US1	TO92	L78L08CZ	1
NE555	Timing Circuit	US2	751-02_N	MC1455D	1
LM385Z-2.5	Adjustable Micropower Voltage Reference	US3	Z03A	LM285Z	1
TLC272	LinCMOS Precision Dual Operational Amplifier	US4	JG008	TLC272AIJG	1
LM385Z-1.2	Adjustable Micropow	US5	Z03A	LM285Z	1